
CANADIAN REGULATIONS AND PROCEDURES FOR PEDIGREED SEED CROP PRODUCTION



Canadian Seed Growers' Association **Circular 6** © 2005

Revision 1.5-2010

February 1, 2010

This revised version 1.5-2010 of the *Canadian Regulations and Procedures for Pedigreed Seed Crop Production — Circular 6* supersedes all previous versions.

Active seed growers and crop certificate assignees will be advised of changes in these regulations.

The official version of *Canadian Regulations and Procedures for Pedigreed Seed Crop Production — Circular 6* is maintained at the CSGA's website: www.seedgrowers.ca. This version is published for convenient reference.

QUICK REFERENCE SUMMARY
**MAJOR SEED CROPS AND SPECIFIC SECTION REQUIREMENTS
IN CIRCULAR 6**

CROP	SECTION	PEDIGREED CLASS
Bean	03 12	except Select plots Select plots
Canola, Rapeseed, Mustard		
Hybrid	05	except Foundation plots
Other	04	except Foundation plots
All	13	Foundation plots
Cereals (e.g. Barley, Oats, Wheat)	02 12	except Select Plots Select plots
Corn		
Hybrid	08	
Open-pollinated	09	
Flax	02 12	except Select plots Select plots
Forage Grasses	06	
Forage Legumes	07	
Industrial Hemp	10 11	except Foundation plots Foundation plots
Pea	03 12	except Select plots Select plots
Pulse Crops (e.g. Lentils)	03 12	except Select plots Select plots
Soybean	03 12	except Select plots Select plots
Sunflower	16 13	except Foundation plots Foundation plots

TABLE OF CONTENTS BY SECTION

SECTION	CONTENT DESCRIPTION
0	Introduction: Foreword; Objectives; Information and Contacts; First Steps to Producing Pedigreed Seed Crops; Procedures for the Production of Pedigreed Seed Crops
1	Regulations for All Pedigreed Seed Crops
2	Foundation, Registered and Certified Production of Barley, Buckwheat, Canaryseed, Durum, Flax, Oat, Rye, Triticale, and Wheat
3	Foundation, Registered and Certified Production of Bean, Fababean, Lentil, Lupin, Pea, and Soybean
4	Certified Production of Canola, Mustard, Oilseed Radish, and Rapeseed (including spring and winter varieties)
5	Certified Production of Hybrid Canola and Rapeseed
6	Foundation, Registered and Certified Production of Grasses
7	Foundation, Registered and Certified Production of Alfalfa, Birdsfoot Trefoil, Clover, Crown Vetch, Milkvetch, and Sainfoin
8	Foundation and Certified Production of Hybrid Field Corn
9	Foundation, Registered and Certified Production of Open Pollinated Corn
10	Registered and Certified Production of Industrial Hemp
11	Probation and Foundation Plot Production of Industrial Hemp
12	Probation and Select Plot Production of Barley, Bean, Buckwheat, Canaryseed, Durum, Fababean, Flax, Lentil, Lupin, Oat, Pea, Rye, Soybean, Triticale, and Wheat
13	Probation and Foundation Plot Production of Canola, Mustard, Oilseed Radish, Rapeseed, Safflower, and Sunflower
14	Foundation, Registered and Certified Production of Other Crops
15	Certified Production of Safflower
16	Crops of Open-Pollinated and Hybrid Sunflower
17	Crops of Carrot, Mangel, Sugar Beet, and Rutabaga (Turnip)
18	Crops of Tobacco
19	Crops of Vegetables

Appendix A*Sample Documents and CSGA Forms:*

1. Application for Crop Inspection and Membership (**Form 100**)
2. Report of Seed Crop Inspection
3. Report of Plot Production (**Form 50**)
4. Authorization to Assign a Crop Certificate (**Form 179** and **Form 179A**)
5. Crop Certificate
6. Application to Commence Probation Plot Production (**Form 154**)
7. Official Seed Sealing Tags
8. Application for Appeal (**Form 200**)
9. Land Use Verification – Prior to Planting (**Form 101**)
10. Declaration of Percent Hybrid Seed (**Form 180**)
11. Demotion of Breeder Seed Application (**Form 45**)
12. Application for Breeder Seed Crop Certificate and Certification Eligibility (**Form 43**)
13. Variety Certification Eligibility Application (**Form 300**)
14. Refuge Declaration (**Form 182**)

Appendix B

- The Organisation for Economic Cooperation and Development (OECD) Seed Certification Schemes
- The Association of Official Seed Certifying Agencies (AOSCA)
- Plant Breeders' Rights (PBR)

Appendix C

- Glossary

Appendix D

- Seed Crops and Scientific Names

Related CSGA Regulations and Programs (available from CSGA)

- Canadian Regulations and Procedures for Production of Breeder Seed Crops
- Native Plant Certification Program
- Identity Preserved Program
- CSGA By-laws

CANADIAN SEED GROWERS' ASSOCIATION



CANADIAN REGULATIONS AND PROCEDURES FOR PEDIGREED SEED CROP PRODUCTION – CIRCULAR 6

RECORD OF AMENDMENTS

Amendments to the *Canadian Regulations and Procedures for Pedigreed Seed Crop Production* will be issued as required. Amendments will be numbered and dated. Please ensure the amendments outlined below have been inserted. If any amended pages are missing, contact the CSGA or download pages from the CSGA website (www.seedgrowers.ca). Remove obsolete pages.

Amendment Number & Date	Description of Amendment (Section/Sub-section Number(s), page number(s), etc.)	Entered by:
01-20050509	Sections 4.4.2, 6.4.6, 12.4.3.	
01.1-20060201	Sections: 0-1, 0-3, 0-11, 1.7.1, 1.7.4, 1.7.7, 2 (In this Sec.), 2.2.2a), 2.2.5, 2.4.4, 3.3.7, 4.3.3, 5.5.5f), 9.1.2, 9.2.1, 9.2.2, 11.6.1b), 12 (In this Sec.), 12.4.2, 12.4.3, Appendix A.5.	
01.2-20070201	Sections: 0-1, 2 (In this Sec.), 2.2.2a), 2.2.5, 4.4.1b), 4.4.4, 4.5.4, 5.5.1b), 5.5.5, 5.6.2, 8.5.1a), 13.6.1b), 13.6.4, 13.8.3.	
01.3-20080201	Sections: 0-1, 0-3, 0-4, 0-5, 0-11, 0-12, 1.9.1, 1.17.7, 1.21.3, 2 (In this Sec.), 2.2.5, 2.5.1, 3.2.5, 3.2.6, 3.4.2, 6.5.5, 10.4.4, 11.2.8, 11.2.9, 11.3.4, 11.3.5, 11.6.2, 11.6.4, 12(In this Sec.), 12.2.10, 12.2.11, 12.3.9, 12.3.10, 12.4.3, 13.2.10, 13.2.11, 13.3.5, 13.3.6, Sec. 14, Sec. 17, Sec. 19, Appendix A, A-1, A-15, Appendix C, C-10.	
01.4-20090201	Sections: 0-1, 0-4, 0-5, 0-10, 0-11, 0-12, 1.12.3, 2.2.5, 2.4.2, 4.4.2, 5.5.2, 12.4.3, 12.6.2, 12.6.4, 13.6.1, 13.6.4, Sec. 14, Appendix A: A.14 on A-1 and A-15.	
01.5-20100201	Sections: 0-1, 0-2, 0-3, 0-4, 0-5, 0-11, 0-12, 1.5.1, 1.12.3, 1.16.3, 1.17.4, 1.17.6, 1.21.3, 2.2.5, 3.1.4, 3.2.2, 3.3.5, 4.4.1, 4.4.4, 4.5.4, 5.5.1, 5.5.5, 5.6.2, 6.2.2, 6.4.6, 7 (In this Sec.), 7.2.2, 7.4.5, 7.5.3, 10.4.4, 11.6.4, 12 (In this Sec.), 12.3, 12.4.3, 12.5.7, 13.6.1, 13.6.4, 13.8.3, Sec. 14, Sec. 16, Appendix A: A.11 A.14 on A-1 and A-15, Appendix C: C-5, C-6, C-12.	

SEED CROP CERTIFICATION

Seed crop certification is a program of planned production, record keeping, unbiased inspections, and rigid standards to ensure the production of high quality, variety specific seed. Whether by traditional means or with the use of biotechnology, plant breeders continue to produce superior varieties of field crops. By overseeing production of seed crops, CSGA provides the vital link between plant breeders and farmers who benefit from these advances. Certified seed is derived from a seed crop that has been issued a CSGA crop certificate, is labelled with an official blue Certified tag (or bulk pedigreed certificate) and graded with a Canada pedigreed grade name when sold in Canada. The blue Certified tag is a symbol of the high quality standards of certification assuring dependable performance.

Certification is a limited generation concept whereby variety specific characteristics are maintained. New varieties developed by plant breeders are increased to supply farmers with seed of superior performance.

BREEDER SEED PLOTS → **FOUNDATION SEED** → **CERTIFIED SEED** → **GRAIN**

Breeder Seed is developed and maintained by the CSGA-recognized plant breeders of public research institutions and private companies.

Foundation Seed is the first generation for most open-pollinated crops, and second generation for most self-pollinated crops, produced from Breeder seed and rogued for off-types to meet variety descriptions and strict Foundation purity standards.

Certified Seed is the first generation for most open-pollinated crops, and second generation for most self-pollinated crops, produced from Foundation seed by CSGA seed growers for sale to farmers to use in planting their commercial grain acreage.

For most self-pollinated crops, Select plots are the first generation from Breeder seed and Registered crops are the first generation from Foundation seed. Most open-pollinated crops are produced in Foundation plots.

Seed crop certification is performed for CSGA seed growers and processors dedicated to taking the extra steps necessary in planting, harvesting, handling, storage, and conditioning to produce Certified seed.

FOREWORD

The Canadian Seed Growers' Association (CSGA) is recognized by the federal *Seeds Act and Regulations* as the official Canadian pedigreering agency responsible for prescribing varietal purity standards and certifying seed crops of all agricultural crops, with the exception of potatoes. The Association came into being in 1904, when both President and Secretary were officials from the federal Department of Agriculture. It was not until 1923 that the first non-government employee took over as Secretary, and not until 1925 was the office of President filled by other than a federal government officer. In 1926, the Association elected its first grower President.

The *Canadian Regulations and Procedures for Pedigreed Seed Crop Production*, as prepared by the CSGA, represent the collective experience of federal, university and provincial research and regulatory specialists and representatives of the seed trade assisted by the practical experience of seed growers.

Changes in methods and operations have taken place over the years, but the aims and objectives of the CSGA – to improve pedigreed seed production and usage – have not changed. The co-regulatory relationship with the inspection branch of the Department of Agriculture, now the Canadian Food Inspection Agency (CFIA), has continued over the years on a partnership basis. The CSGA also works closely with the Research Branch of Agriculture and Agri-Food Canada, the agricultural faculties of universities throughout the country, provincial ministries of agriculture, the Canadian Seed Institute (CSI), the Canadian Seed Trade Association (CSTA), the Commercial Seed Analysts Association of Canada (CSAAC), the Association of Official Seed Certifying Agencies (AOSCA), the Organisation for Economic Cooperation and Development (OECD) Seed Schemes, and many other related organizations.

The CSGA's affairs are conducted by a President and a 24-member Board of Directors. Fourteen directors are active growers elected by the general membership, and nine are appointed by Provincial Ministers of Agriculture. The CSGA is located in Ottawa under the supervision of the Executive Director, who is also a director of the Association.

Provision is made for the formation of provincial or regional organizations affiliated with the CSGA. These provincial organizations are not authorized to issue crop certificates or to act in any way as pedigreering agencies. They act as a liaison between seed growers and the national Association, and conduct promotional and extension programs on a provincial basis.

The CSGA assures Breeder seed quality through its *Canadian Regulations and Procedures for the Production of Breeder Seed Crops*, which include requirements for professional recognition of Breeders, audited Quality Management Systems, and seedlot testing for compliance with federal seed grade standards.

Most self-pollinated crops are pedigreed through five classes: Breeder, Select, Foundation, Registered and Certified. Most open-pollinated crops are pedigreed through three classes: Breeder, Foundation and Certified.

Varietal purity is maintained by limits on generations or multiplications as well as pedigreed classes, parent seed pedigree verification, restrictions on previous land use, isolation distance, impurities, seed crop inspections and other regulations established by the CSGA. Perennial crops are also subject to limits on the age of stand or number of crops eligible for pedigreed status.

Breeder, Select, Foundation and Registered seed are principally multiplication classes. Certified seed – the terminal pedigreed class – is the seed recommended for commercial crop production.

The pedigreing of seed and seed crops ensures varietal purity. This is especially important to maintain yield, quality, disease resistance and the other distinguishing characteristics of a variety.

From its office in Ottawa and through Certified seed growers, government representatives, and the seed trade across the country, the CSGA has worked since 1904 to ensure the supply of high quality seed for crop production.

OBJECTIVES

The objectives of the Canadian Seed Growers' Association are:

- To ensure, and certify to, the varietal purity of seed crops produced by its members and to maintain the pedigree thereof.
- To identify, and certify to, for purposes other than further pedigreeing, the varietal purity of seed crops produced from superior propagating material.
- To encourage the development and introduction of superior varieties and strains of plants.
- To develop programs which expand the use of pedigreed seed.
- Generally to contribute to the establishment and maintenance of high standards in yield and quality of agricultural crops.
- To co-operate with other agencies which have an interest in seed production, promotion and distribution in Canada and abroad.
- To coordinate the endeavors of pedigreed seed growers with those of plant breeders and commercial crop producers.

INFORMATION AND CONTACTS

Canadian Seed Growers' Association

For more information on CSGA's requirements, contact:

Mailing Address:

Canadian Seed Growers' Association
P.O. Box 8455
Ottawa, Ontario
Canada K1G 3T1

Telephone: (613) 236-0497

Fax: (613) 563-7855

Courier Address:

Canadian Seed Grower's Association
202-240 Catherine Street
Ottawa, Ontario
Canada K2P 2G8

Website: www.seedgrowers.ca

A complete list of CSGA office staff is available from the CSGA's website.

Roy van Wyk
Operations and Communications Manager
Tel: (613) 236-0497 Ext. 228
E-mail: vanwykr@seedgrowers.ca

René Daoust
Operations Co-ordinator
Tel: (613) 236-0497 Ext. 226
E-mail: daoustr@seedgrowers.ca

Gail Harris
Operations Co-ordinator
Tel: (613) 236-0497 Ext. 227
E-mail: harrisg@seedgrowers.ca

Canadian Food Inspection Agency

Enquiries relating to enforcement of the federal seeds regulations should be directed to seed inspection staff at the Canadian Food Inspection Agency (CFIA). A complete list of CFIA office contact information is available at: www.inspection.gc.ca.



Canadian Food
Inspection Agency

Agence canadienne
d'inspection des aliments

CANADIAN FOOD INSPECTION AGENCY (CFIA) Central Offices for Seed Inspection		
District	Address	Phone/Fax
British Columbia	Box 217 Creston, BC V0B 1G0	Tel: (250) 428-4123 Fax: (250) 428-4380
Alberta North	Room 205 7000 113 th Street Edmonton, AB T6H 5T6	Tel: (780) 495-3333 Fax: (780) 495-3359
Alberta South	Floor 1, Room 102 110 Country Hills Landing NW Calgary, AB T3K 5P3	Tel: (403) 299-7669 Fax: (403) 221-3296
Saskatchewan	Room 201 421 Downey Rd. Saskatoon, SK S7N 4L8	Tel: (306) 975-4240 Fax: (306) 975-4339
Manitoba	613-269 Main Street Winnipeg, MB R3C 1B2	Tel: (204) 983-2200 Fax: (204) 984-6008
Ontario	259 Woodland Road Suite A Guelph, ON N1H 8J1	Tel: (519) 837-9400 Fax: (519) 837-9774
Quebec	2954 boul. Laurier, Suite 100 Quebec, QC G1V 5C7	Tel: (418) 648-7373 Ext. 139 Fax: (418) 648-4792
Atlantic	Box 6088, 5th Floor, 1081 Main St. Moncton, NB E1C 8R2	Tel: (506) 851-7671 Fax: (506) 851-2689
CFIA Headquarters		
Ottawa	Seed Section Canadian Food Inspection Agency 59 Camelot Drive Ottawa, ON K1A 0Y9	Tel: (613) 225-2342 Fax: (613) 228-6629

SECRETARIES OF CSGA PROVINCIAL AND REGIONAL BRANCHES AND ASSOCIATIONS		
Name	Address	Phone/Fax
BRITISH COLUMBIA Kerry Clark	B.C. Ministry of Agriculture, Fisheries and Food 1201 – 103 rd Ave. Dawson Creek, BC V1G 4J2	Tel: (250) 784-2559 Fax: (250) 784-2299 Email: kerry.clark@gems9.gov.bc.ca
ALBERTA Lorena Pahl	Seed Industry Partnership 5030 - 50 St. Lacombe, AB T4L 1W8	Tel: (403) 782-8022 Fax: (403) 782-5514 Email: lorena.pahl@seed.ab.ca
SASKATCHEWAN Dave Akister	10 - 41 West Broadway Yorkton, SK S3N 0L6	Tel: (306) 786-6266 Fax: (306) 783-2211 Email: saskseed@sasktel.net
MANITOBA Jennifer Stow-Kehler	R.R.#3, Box 121 Carmen, MB R0G 0J0	Tel: (204) 745-6274 Fax: (204) 745-6282 Email: manseed1@mts.net
ONTARIO Harold Rudy	1 Stone Rd. West Guelph, ON N1G 4Y2	Tel: (519)826-4214/800-265-9751 Fax: (519) 826-4224 Email: harold.rudy@ontariosoilcrop.org
QUEBEC Geneviève Blain	3800 boul. Casavant Ouest St. Hyacinthe, PQ J2S 8E3	Tel: (450) 774-9154 Fax: (450) 778-3797 Email: genevieve.blain@upa.qc.ca
MARITIMES Daniel Savoie	Regional Crop Development Officer Agriculture & Aquaculture P.O. Box 5001 Grand-Falls, N.B. E3Z 1G1	Tel: (506)-473-7755 Fax: (506)-473-6641 Email: daniel.savoie@gnb.ca

FIRST STEPS TO PRODUCING A PEDIGREED SEED CROP

1. Obtain a copy of the documents you require, such as:
 - *Canadian Regulations and Procedures for the Production of Pedigreed Seed Crops – Circular 6.*
 - *Application for Crop Inspection and Membership* in the CSGA (Form 100).
 - Fee schedule for current crop year.
 - Locations of local seed crop inspection offices.
 - The CSGA calendar of application deadline dates and events.
 - Variety descriptions of the varieties you intend to produce.
 - *Rogues and Roguing* manual.
 - *Forage Production* manual (if producing forage crops for seed).
 - *Assignment of Crop Certificate* (Form 179) for perennial crops with crop certificates assigned to another party, or the *Annual Authorization to Assign Crop Certificates* (Form 179A).

Samples and explanations of documents are provided in Appendix A.

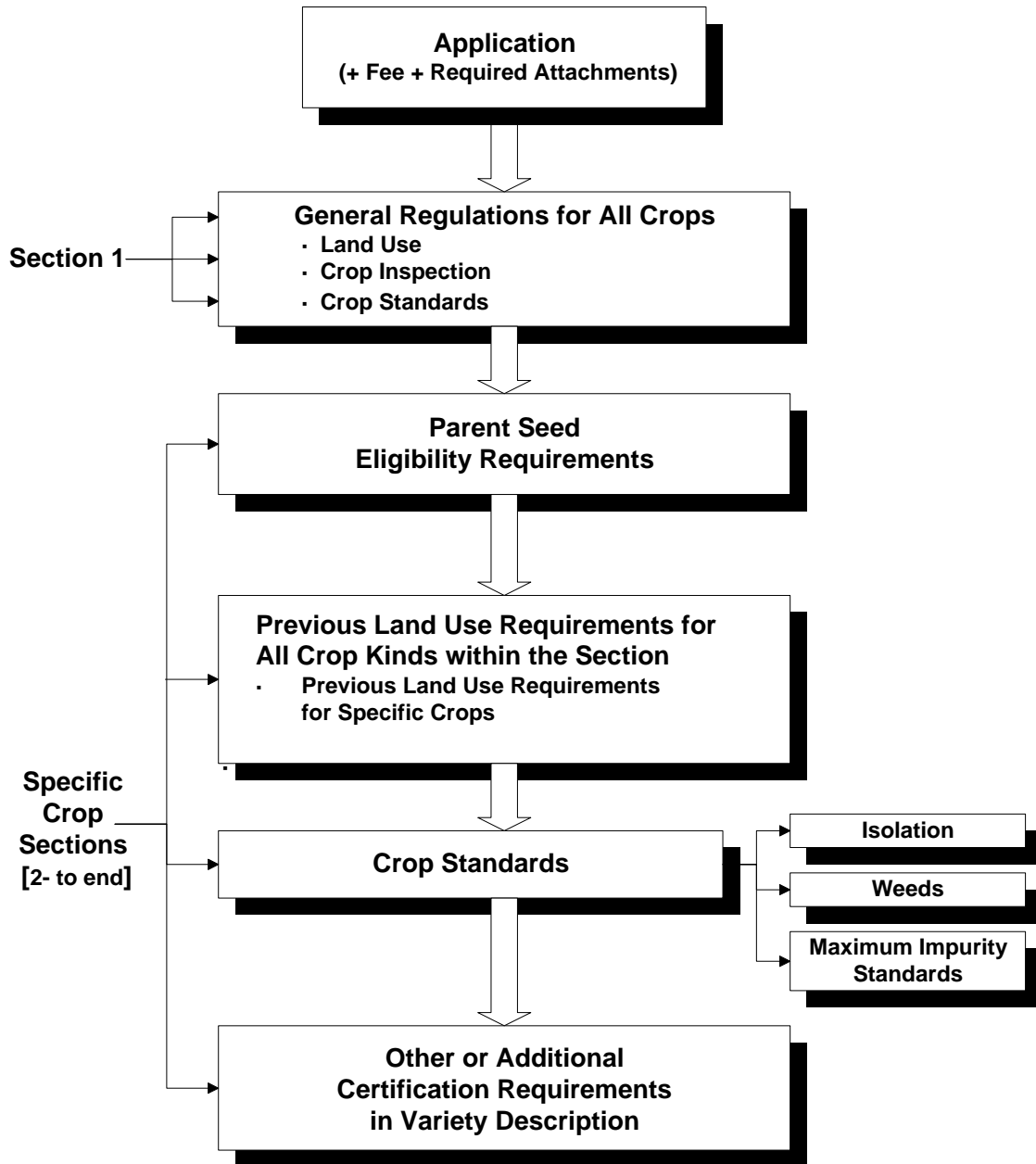
2. Purchase pedigreed seed of Foundation or Registered class.

This seed may be purchased in bags or in bulk. The bagged seed must be tagged with official tags. Pedigreed seed purchased in bulk must be accompanied by official pedigree documentation supplied by the seller. The tags and/or documentation must be kept to present to the authorized seed crop inspector and the CSGA on request. This is proof of the pedigree of the seed you sow. A copy of the mechanical purity and germination analysis certificate should also be available to you for this seed.

3. Make sure that the seed is sown on land meeting the requirements of the regulations. Isolate the crop according to requirements.
4. The *Application for Crop Inspection and Membership* (Form 100) must be completed (including maps) and received by the CSGA before the prescribed deadline dates on the CSGA calendar. Fees must accompany the application.
5. The crop must be rogued throughout the growing season to remove plants of other varieties, off-types, difficult-to-separate other crop kinds, as well as objectionable weeds.
6. **Do not harvest the crop until you are positive that the crop has been inspected by an inspector authorized by the CSGA, such as the CFIA.**

The inspector must provide you with a copy of the report of crop inspection. The original of this report is used by the CSGA to appraise the crop and determine its eligibility for certification.

Summary of CSGA Requirements for Seed Crop Certification Circular 6



PROCEDURES FOR THE PRODUCTION OF PEDIGREED SEED CROPS

This portion of the manual explains the general procedures for the production and certification of a pedigreed seed crop.

There are three stages in the production and identification of pedigreed seed. The first is the production of a pedigreed seed crop. If all the requirements for this are met, the CSGA issues a crop certificate. This certifies that the crop meets the requirements for varietal purity and crop standards and shows the pedigreed status (Breeder, Select, Foundation, Registered, Certified) for which the seed is eligible. The second stage is the careful harvesting, handling, conditioning and storage of the seed to preserve purity and quality. The third stage is inspection of the seed to determine its eligibility for a grade under the federal *Seeds Act and Regulations*. Factors in this are germination, freedom from weed seeds and other crop kinds and general quality. If, from this inspection, the seed qualifies for an official grade, the grader, accredited by the CFIA, authorizes printing of official labels confirming the class of seed and the grade. For pedigreed seed handled in bulk, Bulk Storage Facilities, registered by the CFIA, may also issue a certificate which guarantees that the seed meets grading requirements.

Regulations

Growers should study the CSGA regulations in this manual and plan their operations to comply with them. The official current version of the *Canadian Regulations and Procedures for Pedigreed Seed Crop Production* is maintained at: www.seedgrowers.ca. If there are questions as to correct procedures, the grower should contact the CSGA for clarification.

Land Requirements

To produce pedigreed seed crops, land is chosen which meets requirements with respect to previous crops and isolation, as outlined in the regulations for each crop kind. Certain crops grown in previous years may render the land unacceptable for pedigreed seed production of some crops in following years. It is necessary to plan ahead and to keep accurate records of crops grown on land in previous years.

Seed Requirements

The seed used must be of a class eligible to produce an additional class of pedigreed seed (e.g., Certified seed cannot normally be used for pedigreed seed production). These classes are specified in the regulations. In cereals, for example, while a grower wishing to produce Certified seed may normally sow Registered, Certified seed may also be produced from Select or Foundation.

The grower must retain documents to prove the class of seed planted. This document is the *Crop Certificate* if the grower produced the seed. If purchased seed was sown, the documents are the official seed labels which were attached to the bags and/or bulk seed certification documents. The crop certificate and/or all labels are to be retained and available to the inspector when the crop is inspected. The CSGA may also require the grower to forward one or more of the labels to the CSGA.

Application for Crop Inspection and Membership

When the grower has decided on the land and seed to use and has seeded the crop, the grower then completes an *Application for Crop Inspection and Membership* (Form 100), and includes directions to the farm and fields. (Refer to Appendix A.1.) The first two copies of the form are to be mailed to the CSGA in Ottawa with the appropriate national and Branch fees as detailed in the fee schedule accompanying the application form. Cheques or money orders are to be made payable to the Canadian Seed Growers' Association. The grower retains the third copy of the *Application for Crop Inspection and Membership*. The CSGA forwards a copy of the application to authorized inspectors, usually the local office of the CFIA, who contact the grower and conduct inspection of the crop.

In the case of a partnership or corporation, the application form must be signed by a designated signing officer. The CSGA record is kept in the name of the designated person. See glossary for definition of "Partnerships."

The *Application for Crop Inspection and Membership* is available from the CSGA, from CSGA's website at www.seedgrowers.ca, most offices of CFIA, or from the secretary of the provincial and regional branches and associations. Crops for which applications for crop inspection are received by the CSGA after the deadline date may be inspected, but only when inspection resources are available.

Isolation, Roguing and Management

Isolation of seed crop fields, as required by the regulations, should be completed before crop inspection. Roguing must be done when impurities and off-types can be readily identified and before crop inspection. Failure to remove impurities and off-types could result in decline of the crop's pedigree certification. Weed control should be done using recommended control measures.

Crop Inspection and Crop Certificate

It is the grower's responsibility to:

- advise the local authorized inspectors, usually at the local office of the CFIA, prior to crop inspection if the crop is not to be inspected;
- ensure that the crop has been inspected prior to cutting the crop.

A crop certificate will not be issued if a grower harvests or swaths the crop before inspection. The crop should be inspected at a stage of growth when varietal purity is best determined.

The grower should have available for the inspector all the necessary documents and should provide on the application complete directions to field location(s).

After the crop has been inspected, the inspector will complete a *Report of Seed Crop Inspection*, the original of which is forwarded to the CSGA and a copy given to the grower. If the CSGA determines, from its appraisal of this report, that the crop conforms to the required standards, a crop certificate may then be issued.

Assigning a Crop Certificate (Form 179/179A)

The grower of a pedigreed seed crop may assign the crop certificate to an assignee (usually the vendor of the parent seeds or vendor's designate). Assignment of a crop certificate to an assignee means that the grower has directed the CSGA to issue that crop certificate in the names of both the grower and the assignee, to send that crop certificate to the assignee and a notification of issuance to the grower and also to permit the assignee to access all CSGA certification records for that crop.

Except for perennial crops, growers assign crop certificates to an assignee on the *Application for Crop Inspection and Membership* and/or the *Annual Authorization to Assign a Crop Certificate* (CSGA Form 179A). For perennial crops, assignment of crop certificates requires submission to the CSGA of a completed *Authorization to Assign a Crop Certificate* (Form 179), attached to the *Application for Crop Inspection and Membership*, to confirm the term of the assignment. The *Application for Crop Inspection* should be submitted to CSGA in the name of the grower.

Seed harvested from an assigned crop must be processed, graded and labeled according to the federal *Seeds Act and Regulations* before it can be sown for further pedigreed seed crop production by anyone other than the grower of the seed crop. (Refer to Section 1.19.)

Grower's Records

Records should be kept of all pedigreed seed planted and should include quantity of seed and acres planted as well as field identification. Parent seed records should include crop certificate and CSGA sequence numbers from the *Report of Seed Crop Inspection* for a grower's own seed and, for purchased seed, crop certificate and seed certificate numbers from bag labels or bulk seed certification documents.

A grower should keep a complete file of the following documents:

- *Application for Crop Inspection and Membership* (Form 100);
- crop inspection reports;
- crop certificates issued, unless the certificate was assigned to another party;
- seed analysis certificates (purity and germination);
- pedigreed labels (tags) of parent seed planted;
- quantity of seed planted;
- year-to-year records of the grower's farm(s) showing:
 - all fields, with identification numbers;
 - the area of each field;
 - the kind and, if known, the variety of crop grown in each field or land use in that year;
 - on fields used for pedigreed seed production, the crop certificate number of the seed planted and the crop certificate number issued for each pedigreed seed crop produced.

Seed Equipment

All equipment used in the production, handling and processing of pedigreed seed, including seed planters and drills, combines, trucks and seed cleaning or processing equipment, must be cleaned thoroughly before use, particularly if it has been used previously for a different variety or kind of seed or grain. This is essential to prevent contamination.

Seed Storage

Seed from each field should be stored separately from all other fields in cleaned storage facilities. If a grower has more than one field of the same variety, and one field is rejected, all seed of that variety may be rejected for certification if the seed from other fields is stored with it. Seed of different kinds, varieties, or classes must be stored separately.

Grading and Labeling of Seed

Harvested seed for which a crop certificate has been issued is not considered as pedigreed seed eligible for sale with a variety name, unless it is processed, inspected, graded and labeled according to the federal *Seeds Act and Regulations*.

Maintaining the reliable reputation of pedigreed seed requires processing to very high quality standards. Processing to a lower standard involves potential purity risks and could damage the reputation for quality of pedigreed seed. Tags should remain on bags of pedigreed seed until seeding time.

Reasons Why Crops are Declined Pedigreed Status

CSGA records indicate that less than 2 percent of the crops that are inspected each year are declined pedigreed status for one or more of the following reasons:

- ***Other Crop Kinds in excess of the CSGA standards for difficult-to-separate crop kinds*** (e.g., barley plants in a wheat crop). This type of problem is usually the result of volunteer growth from a previous crop grown on the land or the improper cleaning of seeding equipment prior to sowing the field. All crops for pedigree should be intensively rogued throughout the growing season and prior to inspection. Official variety descriptions define the characteristics of a variety.
- ***Off-types or Other Varieties in excess of the maximum impurity standard for the variety*** (e.g., bearded types in a non-bearded variety). This may result from seed contamination, previous crops volunteering, poorly cleaned equipment or mixing of seed lots at seed processing or seeding. All crops for pedigree should be intensively rogued throughout the growing season and prior to inspection.
- ***Previous Land Use not conforming to the regulations*** (e.g., growing a seed crop on land which produced a commercial crop of the same crop kind the previous year). Some crop kinds, especially for plot production, require careful selection of land because of previous land use conditions, which may extend up to 5 prior years. Accurate land history records are essential.
- ***Very Weedy crops*** are declined because the excessive presence of weeds does not allow adequate inspection of the crop for varietal impurities and other crop kinds. Very weedy crops can also damage the quality reputation of pedigreed seed. For some crop kinds, there are specific weeds that must not be present, e.g., Cleavers Bedstraw or Wild Mustard in Canola/Rapeseed/Mustard crops and prohibited noxious weeds in all pedigreed seed crops.
- ***Insufficient Isolation*** of the crop. CSGA regulations require that crops for pedigree be isolated from other crops which might offer a source of varietal or mechanical contamination through cross-pollination or harvesting mistakes.
- ***Seed Planted not Eligible*** results from Certified seed being sown; seed of foreign origin for which pedigree cannot be established or seed not tagged or properly documented according to the federal *Seeds Act and Regulations*.
- ***Crop Cut before Inspection*** results in an automatic decline of pedigree to the crop. Standing crops must be inspected to determine varietal purity by an authorized inspector recognized by the CSGA.
- ***Age of Stand*** may be reason for demotion or decline of pedigree for perennial crops. Tables 6.4.6 and 7.4.5 prescribe the age of stand for grass and legume seed crops.

Demotion to a Lower Pedigree Class

Crops may also be demoted to a lower pedigree class if the problem is not sufficiently severe to cause a decline of pedigree. Before declining or demoting a crop, the CSGA carefully considers all information available. An appeal process for declines and demotions is available to provide new information to the CSGA (Refer to Section 1.9 and Appendix A.8.)